



# GMT MONTHLY MEMBERSHIP PROGRESS REPORT

Results as of: 1/31/2024

Multiple District 43

LOCATION: KENTUCKY

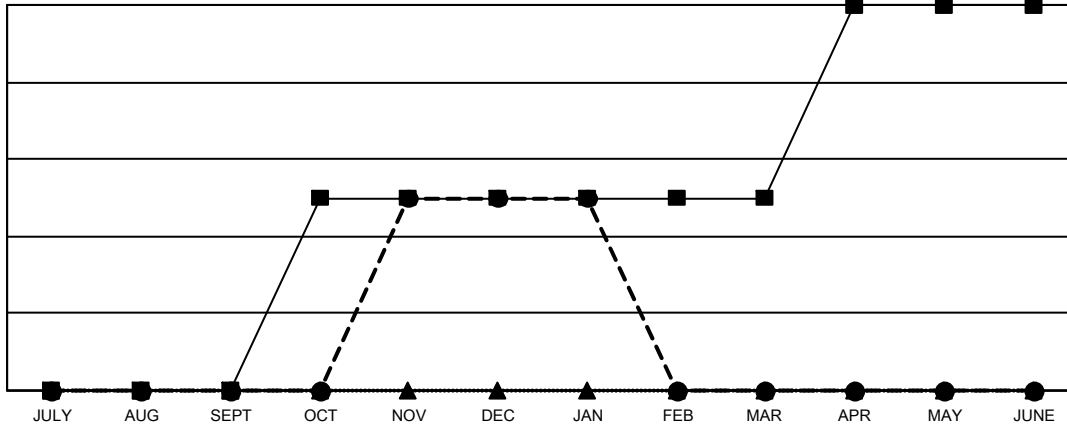
GMT: OPEN

GMT CA 1

Clubs			
RESULTS FOR 2023-2024			
QUARTER	NEW CLUB GOAL	NEW CLUBS	DROPPED CLUBS
JULY/AUG/SEPT	0	0	0
OCT/NOV/DEC	1	1	4
JAN/FEB/MAR	0	0	0
APR/MAY/JUNE	1	0	0

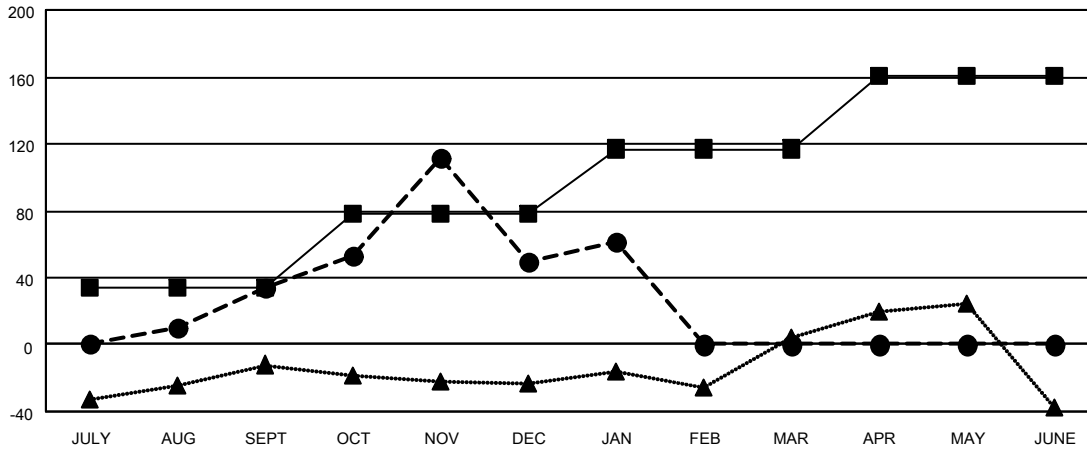
Members			
RESULTS FOR 2023-2024			
QUARTER	MEMBER GROWTH NET GOAL	MEMBER GROWTH ACTUAL	DROPPED MEMBERS ACTUAL (including transfers)
JULY/AUG/SEPT	34	131	91
OCT/NOV/DEC	44	138	122
JAN/FEB/MAR	39	34	18
APR/MAY/JUNE	44	0	0

GOALS AND ACTUAL NEW CLUBS CUMULATIVE



- - CURRENT YEAR GOALS FOR NEW CLUBS
- - CURRENT YEAR ACTUAL NEW CLUBS
- ▲ - LAST YEAR ACTUAL NEW CLUBS

GOALS AND ACTUAL MEMBERS CUMULATIVE



- - MEMBER GROWTH NET GOAL
- - MEMBER GROWTH ACTUAL
- ▲ - LAST YEAR MEMBERSHIP ACTUAL

DROPPED CLUBS: 4	
<b>DROPPED MEMBERS</b>	
DECEASED	23
CLUB CANCELLED	31
OTHER	177
<b>TOTAL</b>	<b>231</b>

75 CLUBS OF 145 ADDED 1 OR MORE NEW MEMBERS

GENDER DISTRIBUTION	
MALE	2,384 (63.76%)
FEMALE	1,355 (36.24%)

[CLICK HERE FOR CUMULATIVE MEMBERSHIP DATA](#)

TOTAL FAMILY UNIT MEMBERS	775
FAMILY MEMBERS PAYING HALF DUES	401